

Nutra Pure LLC

Vancouver, WA 98685  
support@cbdpure.com  
(800) 240-9884  
Lic. #

Sample: 12TRC009618.O6020

Strain: CBDPure Hemp Oil 600

Sample Received: 12/26/2018; Report Created: 01/08/2019

Leaf Inventory/Lot ID: ; Leaf Pre-Transfer Inventory/Lot ID:

Leaf Batch ID: ; Leaf Pre-Transfer Batch ID:

Leaf Manifest ID:

CBDPure Hemp Oil 600

Other, Industrial Hemp  
External Batch ID: NP22



24.89  
mg/unit

THC Potency

597.41  
mg/unit

CBD Potency

622.30  
mg/unit

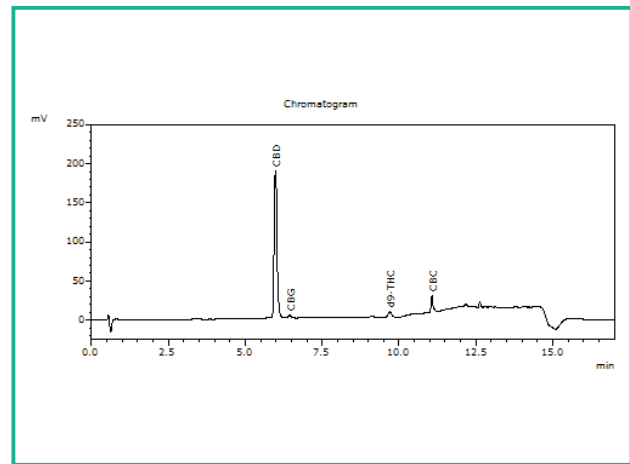
Total Potency\*

## Cannabinoids

1 Unit = Bottle, 52.962g

Analyte	Mass mg/unit	Mass mg/g
THCa	ND	ND
Δ9-THC	24.89	0.47
CBD	597.41	11.28
CBDa	ND	ND
CBN	ND	ND
Δ8-THC	ND	ND
CBDV	ND	ND
CBG	15.36	0.29
CBGa	ND	ND
CBC	18.01	0.34
<b>Total</b>	<b>655.67</b>	<b>12.38</b>

## Chromatogram



THC Potency = THCa \* 0.877 + Δ9-THC; CBD Potency = CBDa \* 0.877 + CBD; LOQ = Limit of Quantitation; Total Potency\* = Total THC + Total CBD. Unless otherwise stated all quality control samples performed within specifications established by the Laboratory.

## Nutra Pure LLC

Vancouver, WA 98685  
support@cbdpure.com  
(800) 240-9884  
Lic. #

## Sample: 12TRC009618.O6020

Strain: CBDPure Hemp Oil 600

Sample Received: 12/26/2018; Report Created: 01/08/2019  
Leaf Inventory/Lot ID: ; Leaf Pre-Transfer Inventory/Lot ID:  
Leaf Batch ID: ; Leaf Pre-Transfer Batch ID:  
Leaf Manifest ID:

## CBDPure Hemp Oil 600

Other, Industrial Hemp  
External Batch ID: NP22



## Microbials

## Pass

Analyte	Limit	Units	Status
E. Coli	1	CFU/g	Pass
Salmonella	1	CFU/g	Pass
Bile-Tolerant Gram-Negative Bacteria	10000	CFU/g	Pass

LOQ = Limit of Quantitation; TNC = Too Numerous to Count; Unless otherwise stated all quality control samples performed within specifications established by the Laboratory.

908 N. Howard St., Suite 101  
Spokane, WA  
(509) 284-7522  
<http://traceanalytics.com/>  
Lic# 0014

  
Sara Minier  
Senior Scientist

Confident Cannabis  
All Rights Reserved  
support@confidentcannabis.com  
(866) 506-5866  
[www.confidentcannabis.com](http://www.confidentcannabis.com)



## Nutra Pure LLC

Vancouver, WA 98685  
support@cbdpure.com  
(800) 240-9884  
Lic. #

## Sample: 12TRC009618.O6020

Strain: CBDPure Hemp Oil 600  
Sample Received: 12/26/2018; Report Created: 01/08/2019  
Leaf Inventory/Lot ID: ; Leaf Pre-Transfer Inventory/Lot ID:  
Leaf Batch ID: ; Leaf Pre-Transfer Batch ID:  
Leaf Manifest ID:

## CBDPure Hemp Oil 600

Other, Industrial Hemp  
External Batch ID: NP22



## Pesticides

Pass

No Residues Detected

Analyte	LOQ	ULOQ	Limit	Mass	Status
---------	-----	------	-------	------	--------

LOQ = Limit of Quantitation; The reported result is based on a sample weight with the applicable moisture content for that sample; Unless otherwise stated all quality control samples performed within specifications established by the Laboratory.



## Nutra Pure LLC

Vancouver, WA 98685  
support@cbdpure.com  
(800) 240-9884  
Lic. #

## Sample: 12TRC009618.O6020

Strain: CBDPure Hemp Oil 600

Sample Received: 12/26/2018; Report Created: 01/08/2019  
Leaf Inventory/Lot ID: ; Leaf Pre-Transfer Inventory/Lot ID:  
Leaf Batch ID: ; Leaf Pre-Transfer Batch ID:  
Leaf Manifest ID:

## CBDPure Hemp Oil 600

Other, Industrial Hemp  
External Batch ID: NP22



## Residual Solvents

Pass

Analyte	LOD	Limit	Mass	Status
	PPM	PPM	PPM	
Acetone	1.0	5000.0	ND	Pass
Benzene	1.0	2.0	ND	Pass
Butanes	1.0	5000.0	ND	Pass
Chloroform	1.0	2.0	ND	Pass
Cyclohexane	1.0	3880.0	ND	Pass
Dichloromethane	1.0	600.0	ND	Pass
Ethyl-Acetate	1.0	5000.0	ND	Pass
Heptanes	1.0	5000.0	ND	Pass
Hexanes	1.0	290.0	ND	Pass
Isopropanol	1.0	5000.0	ND	Pass
Methanol	1.0	3000.0	ND	Pass
Pentane	1.0	5000.0	ND	Pass
Propane	1.0	5000.0	ND	Pass
Toluene	1.0	890.0	ND	Pass
Xylenes	1.0	2170.0	ND	Pass

LOQ = Limit of Quantitation; The reported result is based on a sample weight with the applicable moisture content for that sample; Unless otherwise stated all quality control samples performed within specifications established by the Laboratory.



## Nutra Pure LLC

Vancouver, WA 98685  
support@cbdpure.com  
(800) 240-9884  
Lic. #

## Sample: 12TRC009618.O6020

Strain: CBDPure Hemp Oil 600

Sample Received: 12/26/2018; Report Created: 01/08/2019  
Leaf Inventory/Lot ID: ; Leaf Pre-Transfer Inventory/Lot ID:  
Leaf Batch ID: ; Leaf Pre-Transfer Batch ID:  
Leaf Manifest ID:

## CBDPure Hemp Oil 600

Other, Industrial Hemp  
External Batch ID: NP22



## Heavy Metals

Pass

Analyte	Mass	LOQ	Limit	Status
	PPM	PPM	PPM	
Arsenic	ND	0.139	2.000	Pass
Cadmium	ND	0.111	0.820	Pass
Lead	ND	0.150	1.200	Pass
Mercury	ND	0.027	0.400	Pass

Notes: Subcontracted

LOQ = Limit of Quantitation; The reported result is based on a sample weight with the applicable moisture content for that sample; Unless otherwise stated all quality control samples performed within specifications established by the Laboratory.

