

Nutra Pure LLC

Vancouver, WA 98685
support@cbdpure.com
(800) 240-9884
Lic. #

Sample: 06TRC004719.O2401

Strain: CBD Pure 600

Sample Received: 06/14/2019; Report Created: 06/28/2019

Leaf Inventory/Lot ID: ; Leaf Pre-Transfer Inventory/Lot ID:

Leaf Batch ID: ; Leaf Pre-Transfer Batch ID:

Leaf Manifest ID:

CBD Pure 600

Other, Industrial Hemp
External Batch ID: NP30



ND

THC Potency

675.65
mg/unit

CBD Potency

675.65
mg/unit

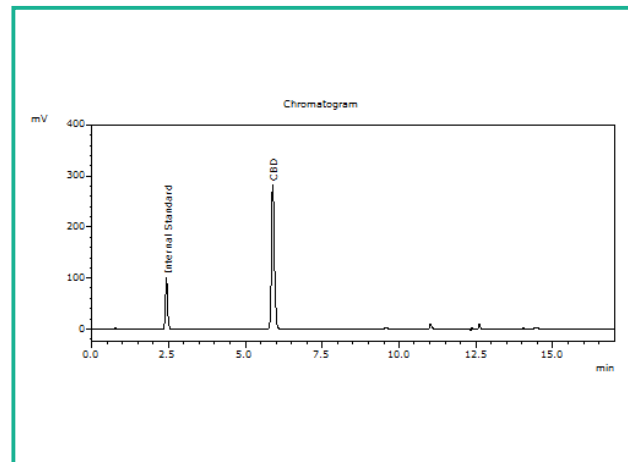
Total Potency*

Cannabinoids

1 Unit = 60 mL Bottle, 56.304g

Analyte	Mass mg/unit	Mass mg/g
THCa	ND	ND
Δ9-THC	ND	ND
CBD	675.65	12.00
CBDa	ND	ND
CBN	ND	ND
Δ8-THC	ND	ND
THCV	ND	ND
CBDV	ND	ND
CBG	ND	ND
CBGa	ND	ND
CBC	ND	ND
Total	675.65	12.00

Chromatogram



THC Potency = THCa * 0.877 + d9-THC; CBD Potency = CBDa * 0.877 + CBD; LOQ = Limit of Quantitation; Total Potency* = Total THC + Total CBD. Unless otherwise stated all quality control samples performed within specifications established by the Laboratory.

908 N. Howard St., Suite 101

Spokane, WA

(509) 284-7522

http://traceanalytics.com/

Lic# 0014

Gwen Bode

Scientist I

Confident Cannabis

All Rights Reserved

support@confidentcannabis.com

(866) 506-5866

www.confidentcannabis.com



This product has been tested by Trace Analytics, Inc using valid testing methodologies and a quality system as required by state law. Values reported relate only to the product tested. Trace Analytics, Inc makes no claims as to the efficacy, safety or other risks associated with any detected or non-detected levels of any compounds reported herein. This Certificate shall not be reproduced except in full, without the written approval of Trace Analytics, Inc. Lic# 0014 - Foreign Matter (Visual Inspection) - Moisture (Moisture Analyzer) - Water Activity (Water Activity Meter) - Microbiological (3M Petrifilm/qPCR) - Potency (HPLC-UV) - Residual Solvents (GCMS) - Mycotoxins (ELISA)

Nutra Pure LLC

Vancouver, WA 98685
support@cbdpure.com
(800) 240-9884
Lic. #

Sample: 06TRC004719.O2401

Strain: CBD Pure 600

Sample Received: 06/14/2019; Report Created: 06/28/2019
Leaf Inventory/Lot ID: ; Leaf Pre-Transfer Inventory/Lot ID:
Leaf Batch ID: ; Leaf Pre-Transfer Batch ID:
Leaf Manifest ID:

CBD Pure 600

Other, Industrial Hemp
External Batch ID: NP30



Microbials

Pass

Analyte	Limit	Units	Status
E. Coli	1	CFU/g	Pass
Salmonella	1	CFU/g	Pass
Bile-Tolerant Gram-Negative Bacteria	10000	CFU/g	Pass

LOQ = Limit of Quantitation; TNC = Too Numerous to Count; Unless otherwise stated all quality control samples performed within specifications established by the Laboratory.

908 N. Howard St., Suite 101
Spokane, WA
(509) 284-7522
<http://traceanalytics.com/>
Lic# 0014

Sara Minier
Senior Scientist

Confident Cannabis
All Rights Reserved
support@confidentcannabis.com
(866) 506-5866



www.confidentcannabis.com

Nutra Pure LLC

Vancouver, WA 98685
support@cbdpure.com
(800) 240-9884
Lic. #

Sample: 06TRC004719.O2401

Strain: CBD Pure 600

Sample Received: 06/14/2019; Report Created: 06/28/2019
Leaf Inventory/Lot ID: ; Leaf Pre-Transfer Inventory/Lot ID:
Leaf Batch ID: ; Leaf Pre-Transfer Batch ID:
Leaf Manifest ID:

CBD Pure 600

Other, Industrial Hemp
External Batch ID: NP30



Pesticides

Pass

No Residues Detected

Analyte	LOQ	ULOQ	Limit	Mass	Status
---------	-----	------	-------	------	--------

LOQ = Limit of Quantitation; The reported result is based on a sample weight with the applicable moisture content for that sample; Unless otherwise stated all quality control samples performed within specifications established by the Laboratory.

908 N. Howard St., Suite 101
Spokane, WA
(509) 284-7522
<http://traceanalytics.com/>
Lic# 0014



Derek Laine
Senior Scientist

Confident Cannabis
All Rights Reserved
support@confidentcannabis.com
(866) 506-5866
www.confidentcannabis.com



This product has been tested by Trace Analytics, Inc using valid testing methodologies and a quality system as required by state law. Values reported relate only to the product tested. Trace Analytics, Inc makes no claims as to the efficacy, safety or other risks associated with any detected or non-detected levels of any compounds reported herein. This Certificate shall not be reproduced except in full, without the written approval of Trace Analytics, Inc. Lic# 0014 - Foreign Matter (Visual Inspection) - Moisture (Moisture Analyzer) - Water Activity (Water Activity Meter) - Microbiological (3M Petrifilm/qPCR) - Potency (HPLC-UV) - Residual Solvents (GCMS) - Mycotoxins (ELISA)

Nutra Pure LLC

Vancouver, WA 98685
support@cbdpure.com
(800) 240-9884
Lic. #

Sample: 06TRC004719.O2401

Strain: CBD Pure 600

Sample Received: 06/14/2019; Report Created: 06/28/2019
Leaf Inventory/Lot ID: ; Leaf Pre-Transfer Inventory/Lot ID:
Leaf Batch ID: ; Leaf Pre-Transfer Batch ID:
Leaf Manifest ID:

CBD Pure 600

Other, Industrial Hemp
External Batch ID: NP30



Residual Solvents

Pass

Analyte	LOQ	Limit	Mass	Status
	PPM	PPM	PPM	
Acetone	1500.0	5000.0	ND	Pass
Benzene	0.6	2.0	ND	Pass
Butanes	1500.0	5000.0	ND	Pass
Chloroform	0.6	2.0	ND	Pass
Cyclohexane	1164.0	3880.0	ND	Pass
Dichloromethane	180.0	600.0	ND	Pass
Ethyl-Acetate	1500.0	5000.0	ND	Pass
Heptanes	1500.0	5000.0	ND	Pass
Hexanes	87.0	290.0	ND	Pass
Isopropanol	1500.0	5000.0	ND	Pass
Methanol	900.0	3000.0	ND	Pass
Pentane	1500.0	5000.0	ND	Pass
Propane	1500.0	5000.0	ND	Pass
Toluene	267.0	890.0	ND	Pass
Xylenes	1953.0	2170.0	ND	Pass

LOQ = Limit of Quantitation; The reported result is based on a sample weight with the applicable moisture content for that sample; Unless otherwise stated all quality control samples performed within specifications established by the Laboratory.

908 N. Howard St., Suite 101
Spokane, WA
(509) 284-7522
<http://traceanalytics.com/>
Lic# 0014



Sara Minier
Senior Scientist

Confident Cannabis
All Rights Reserved
support@confidentcannabis.com
(866) 506-5866
www.confidentcannabis.com



This product has been tested by Trace Analytics, Inc using valid testing methodologies and a quality system as required by state law. Values reported relate only to the product tested. Trace Analytics, Inc makes no claims as to the efficacy, safety or other risks associated with any detected or non-detected levels of any compounds reported herein. This Certificate shall not be reproduced except in full, without the written approval of Trace Analytics, Inc. Lic# 0014 - Foreign Matter (Visual Inspection) - Moisture (Moisture Analyzer) - Water Activity (Water Activity Meter) - Microbiological (3M Petrifilm/qPCR) - Potency (HPLC-UV) - Residual Solvents (GCMS) - Mycotoxins (ELISA)

Nutra Pure LLC

Vancouver, WA 98685
support@cbdpure.com
(800) 240-9884
Lic. #

Sample: 06TRC004719.O2401

Strain: CBD Pure 600

Sample Received: 06/14/2019; Report Created: 06/28/2019
Leaf Inventory/Lot ID: ; Leaf Pre-Transfer Inventory/Lot ID:
Leaf Batch ID: ; Leaf Pre-Transfer Batch ID:
Leaf Manifest ID:

CBD Pure 600

Other, Industrial Hemp
External Batch ID: NP30



Heavy Metals

Pass

Analyte	Mass	LOQ	Limit	Status
	PPM	PPM	PPM	
Arsenic	ND		2.000	Pass
Cadmium	ND		0.820	Pass
Lead	ND		1.200	Pass
Mercury	ND		0.400	Pass

Notes: Subcontracted by Medicine Creek Analytics, 3700 Pacific HWY E, Ste 400, Fife, WA 98424

LOQ = Limit of Quantitation; The reported result is based on a sample weight with the applicable moisture content for that sample; Unless otherwise stated all quality control samples performed within specifications established by the Laboratory.

908 N. Howard St., Suite 101
Spokane, WA
(509) 284-7522
<http://traceanalytics.com/>
Lic# 0014



Sara Minier
Senior Scientist

Confident Cannabis
All Rights Reserved
support@confidentcannabis.com
(866) 506-5866
www.confidentcannabis.com



This product has been tested by Trace Analytics, Inc using valid testing methodologies and a quality system as required by state law. Values reported relate only to the product tested. Trace Analytics, Inc makes no claims as to the efficacy, safety or other risks associated with any detected or non-detected levels of any compounds reported herein. This Certificate shall not be reproduced except in full, without the written approval of Trace Analytics, Inc. Lic# 0014 - Foreign Matter (Visual Inspection) - Moisture (Moisture Analyzer) - Water Activity (Water Activity Meter) - Microbiological (3M Petrifilm/qPCR) - Potency (HPLC-UV) - Residual Solvents (GCMS) - Mycotoxins (ELISA)