

Nutra Pure LLC

Vancouver, WA 98685
support@cbdpure.com
(800) 240-9884
Lic. #

Sample: 03TRC008018.C1339

Strain: CBDPure Hemp Oil 600
Batch#: NP06 02/20; Batch Size: - grams
Sample Received: 03/19/2018; Report Created: 03/21/2018

CBDPure Hemp Oil 600

Concentrates & Extracts, Other
BioTrack Sample ID: ; BT Lot ID: ; BT Manifest ID:



11.15
mg/unit

THC Potency

688.87
mg/unit

CBD Potency

700.02
mg/unit

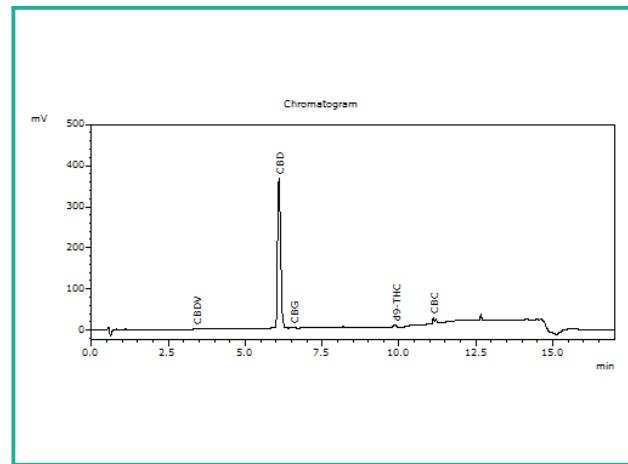
Total Potency*

Cannabinoids

1 Unit = Bottle, 55.734g

Analyte	Mass mg/unit	Mass mg/g
THCa	ND	ND
Δ9-THC	11.15	0.20
CBD	688.87	12.36
CBDa	ND	ND
CBN	ND	ND
Δ8-THC	ND	ND
CBDV	2.79	0.05
CBG	4.46	0.08
CBGa	ND	ND
CBC	5.02	0.09
Total	712.28	12.78

Chromatogram



THC Potency = THCa * 0.877 + Δ9-THC; CBD Potency = CBDa * 0.877 + CBD; LOQ = Limit of Quantitation; Total Potency* = Total THC + Total CBD. Unless otherwise stated all quality control samples performed within specifications established by the Laboratory.



Nutra Pure LLC

Vancouver, WA 98685
support@cbdpure.com
(800) 240-9884
Lic. #

Sample: 03TRC008018.C1339

Strain: CBDPure Hemp Oil 600
Batch#: NP06 02/20; Batch Size: - grams
Sample Received: 03/19/2018; Report Created: 03/21/2018

CBDPure Hemp Oil 600

Concentrates & Extracts, Other
BioTrack Sample ID: ; BT Lot ID: ; BT Manifest ID:



Microbials

Pass

Analyte	Limit	Units	Status
E. Coli	1	CFU/g	Pass
Salmonella	1	CFU/g	Pass
Bile-Tolerant Gram-Negative Bacteria	1000	ND	Pass

LOQ = Limit of Quantitation; TNC = Too Numerous to Count; Unless otherwise stated all quality control samples performed within specifications established by the Laboratory.

908 N. Howard St., Suite 101
Spokane, WA
(509) 284-7522
<http://traceanalytics.com/>
Lic# 0014


Sara Minier
Senior Scientist

Confident Cannabis
All Rights Reserved
support@confidentcannabis.com
(866) 506-5866
www.confidentcannabis.com



Nutra Pure LLC

Vancouver, WA 98685
support@cbdpure.com
(800) 240-9884
Lic. #

Sample: 03TRC008018.C1339

Strain: CBDPure Hemp Oil 600
Batch#: NP06 02/20; Batch Size: - grams
Sample Received: 03/19/2018; Report Created: 03/21/2018

CBDPure Hemp Oil 600

Concentrates & Extracts, Other
BioTrack Sample ID: ; BT Lot ID: ; BT Manifest ID:



Residual Solvents

Pass

Analyte	LOD	Limit	Mass	Status
	PPM	PPM	PPM	
Acetone	1.0	5000.0	ND	Pass
Benzene	1.0	2.0	ND	Pass
Butanes	1.0	5000.0	ND	Pass
Chloroform	1.0	2.0	ND	Pass
Cyclohexane	1.0	3880.0	ND	Pass
Dichloromethane	1.0	600.0	ND	Pass
Ethyl-Acetate	1.0	5000.0	ND	Pass
Heptanes	1.0	5000.0	ND	Pass
Hexanes	1.0	290.0	ND	Pass
Isopropanol	1.0	5000.0	ND	Pass
Methanol	1.0	3000.0	ND	Pass
Pentane	1.0	5000.0	ND	Pass
Propane	1.0	5000.0	ND	Pass
Toluene	1.0	890.0	ND	Pass
Xylenes	1.0	2170.0	ND	Pass

LOQ = Limit of Quantitation; The reported result is based on a sample weight with the applicable moisture content for that sample; Unless otherwise stated all quality control samples performed within specifications established by the Laboratory.

