

Nutra Pure LLC

Vancouver, WA 98685  
support@cbdpure.com  
(800) 240-9884  
Lic. #

Sample: 01TRC006819.O0267

Strain: NP-SG112318

Sample Received: 01/22/2019; Report Created: 02/04/2019

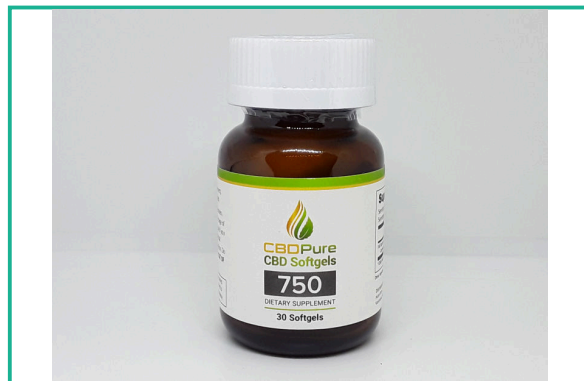
Leaf Inventory/Lot ID: ; Leaf Pre-Transfer Inventory/Lot ID:

Leaf Batch ID: ; Leaf Pre-Transfer Batch ID:

Leaf Manifest ID:

NP-SG112318

Other, Industrial Hemp  
External Batch ID:



**33.79**  
mg/unit

THC Potency

**845.58**  
mg/unit

CBD Potency

**879.38**  
mg/unit

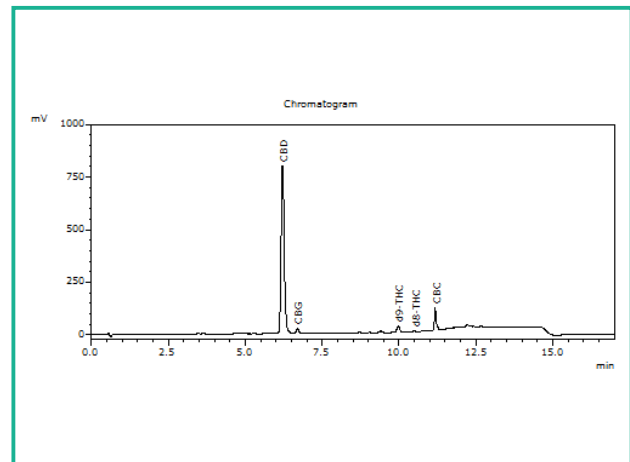
Total Potency\*

## Cannabinoids

1 Unit = Bottle, 19.092g

Analyte	Mass mg/unit	Mass mg/g
THCa	ND	ND
Δ9-THC	33.79	1.77
CBD	845.58	44.29
CBDa	ND	ND
CBN	ND	ND
Δ8-THC	3.25	0.17
CBDV	ND	ND
CBG	21.19	1.11
CBGa	ND	ND
CBC	26.92	1.41
<b>Total</b>	<b>930.74</b>	<b>48.75</b>

## Chromatogram



THC Potency = THCa \* 0.877 + Δ9-THC; CBD Potency = CBDa \* 0.877 + CBD; LOQ = Limit of Quantitation; Total Potency\* = Total THC + Total CBD. Unless otherwise stated all quality control samples performed within specifications established by the Laboratory.

908 N. Howard St., Suite 101  
Spokane, WA  
(509) 284-7522  
<http://traceanalytics.com/>  
Lic# 0014

Sara Minier  
Senior Scientist

Confident Cannabis  
All Rights Reserved  
support@confidentcannabis.com  
(866) 506-5866



This product has been tested by Trace Analytics, Inc using valid testing methodologies and a quality system as required by state law. Values reported relate only to the product tested. Trace Analytics, Inc makes no claims as to the efficacy, safety or other risks associated with any detected or non-detected levels of any compounds reported herein. This Certificate shall not be reproduced except in full, without the written approval of Trace Analytics, Inc. Lic# 0014 - Foreign Matter (Visual Inspection) - Moisture (Moisture Analyzer) - Water Activity (Water Activity Meter) - Microbiological (3M Petrifilm/qPCR) - Potency (HPLC-UV) - Residual Solvents (GCMS) - Mycotoxins (ELISA)

## Nutra Pure LLC

Vancouver, WA 98685  
support@cbdpure.com  
(800) 240-9884  
Lic. #

## Sample: 01TRC006819.O0267

Strain: NP-SG112318

Sample Received: 01/22/2019; Report Created: 02/04/2019  
Leaf Inventory/Lot ID: ; Leaf Pre-Transfer Inventory/Lot ID:  
Leaf Batch ID: ; Leaf Pre-Transfer Batch ID:  
Leaf Manifest ID:

## NP-SG112318

Other, Industrial Hemp  
External Batch ID:



## Microbials

Pass

Analyte	Limit	Units	Status
E. Coli	1	CFU/g	Pass
Salmonella	1	CFU/g	Pass
Bile-Tolerant Gram-Negative Bacteria	10000	ND	Pass

LOQ = Limit of Quantitation; TNC = Too Numerous to Count; Unless otherwise stated all quality control samples performed within specifications established by the Laboratory.

908 N. Howard St., Suite 101  
Spokane, WA  
(509) 284-7522  
<http://traceanalytics.com/>  
Lic# 0014



Sara Minier  
Senior Scientist

Confident Cannabis  
All Rights Reserved  
support@confidentcannabis.com  
(866) 506-5866  
[www.confidentcannabis.com](http://www.confidentcannabis.com)



This product has been tested by Trace Analytics, Inc using valid testing methodologies and a quality system as required by state law. Values reported relate only to the product tested. Trace Analytics, Inc makes no claims as to the efficacy, safety or other risks associated with any detected or non-detected levels of any compounds reported herein. This Certificate shall not be reproduced except in full, without the written approval of Trace Analytics, Inc. Lic# 0014 - Foreign Matter (Visual Inspection) - Moisture (Moisture Analyzer) - Water Activity (Water Activity Meter) - Microbiological (3M Petrifilm/qPCR) - Potency (HPLC-UV) - Residual Solvents (GCMS) - Mycotoxins (ELISA)

## Nutra Pure LLC

Vancouver, WA 98685  
support@cbdpure.com  
(800) 240-9884  
Lic. #

## Sample: 01TRC006819.O0267

Strain: NP-SG112318

Sample Received: 01/22/2019; Report Created: 02/04/2019  
Leaf Inventory/Lot ID: ; Leaf Pre-Transfer Inventory/Lot ID:  
Leaf Batch ID: ; Leaf Pre-Transfer Batch ID:  
Leaf Manifest ID:

## NP-SG112318

Other, Industrial Hemp  
External Batch ID:



## Pesticides

Pass

No Residues Detected

Analyte	LOQ	ULOQ	Limit	Mass	Status
---------	-----	------	-------	------	--------

LOQ = Limit of Quantitation; The reported result is based on a sample weight with the applicable moisture content for that sample; Unless otherwise stated all quality control samples performed within specifications established by the Laboratory.

908 N. Howard St., Suite 101  
Spokane, WA  
(509) 284-7522  
<http://traceanalytics.com/>  
Lic# 0014

Derek Laine  
Senior Scientist

Confident Cannabis  
All Rights Reserved  
support@confidentcannabis.com  
(866) 506-5866  
[www.confidentcannabis.com](http://www.confidentcannabis.com)



This product has been tested by Trace Analytics, Inc using valid testing methodologies and a quality system as required by state law. Values reported relate only to the product tested. Trace Analytics, Inc makes no claims as to the efficacy, safety or other risks associated with any detected or non-detected levels of any compounds reported herein. This Certificate shall not be reproduced except in full, without the written approval of Trace Analytics, Inc. Lic# 0014 - Foreign Matter (Visual Inspection) - Moisture (Moisture Analyzer) - Water Activity (Water Activity Meter) - Microbiological (3M Petrifilm/qPCR) - Potency (HPLC-UV) - Residual Solvents (GCMS) - Mycotoxins (ELISA)

**Nutra Pure LLC**

Vancouver, WA 98685  
support@cbdpure.com  
(800) 240-9884  
Lic. #

**Sample: 01TRC006819.00267**

Strain: NP-SG112318

Sample Received: 01/22/2019; Report Created: 02/04/2019

Leaf Inventory/Lot ID: ; Leaf Pre-Transfer Inventory/Lot ID:

Leaf Batch ID: ; Leaf Pre-Transfer Batch ID:

Leaf Manifest ID:

**NP-SG112318**

Other, Industrial Hemp  
External Batch ID:



## Residual Solvents

**Pass**

Analyte	LOD	Limit	Mass	Status
	PPM	PPM	PPM	
Acetone	1.0	5000.0	ND	Pass
Benzene	1.0	2.0	ND	Pass
Butanes	1.0	5000.0	ND	Pass
Chloroform	1.0	2.0	ND	Pass
Cyclohexane	1.0	3880.0	ND	Pass
Dichloromethane	1.0	600.0	ND	Pass
Ethyl-Acetate	1.0	5000.0	ND	Pass
Heptanes	1.0	5000.0	ND	Pass
Hexanes	1.0	290.0	ND	Pass
Isopropanol	1.0	5000.0	ND	Pass
Methanol	1.0	3000.0	ND	Pass
Pentane	1.0	5000.0	ND	Pass
Propane	1.0	5000.0	ND	Pass
Toluene	1.0	890.0	ND	Pass
Xylenes	1.0	2170.0	ND	Pass

LOQ = Limit of Quantitation; The reported result is based on a sample weight with the applicable moisture content for that sample; Unless otherwise stated all quality control samples performed within specifications established by the Laboratory.

908 N. Howard St., Suite 101  
Spokane, WA  
(509) 284-7522  
<http://traceanalytics.com/>  
Lic# 0014



Sara Minier  
Senior Scientist

Confident Cannabis  
All Rights Reserved  
support@confidentcannabis.com  
(866) 506-5866



This product has been tested by Trace Analytics, Inc using valid testing methodologies and a quality system as required by state law. Values reported relate only to the product tested. Trace Analytics, Inc makes no claims as to the efficacy, safety or other risks associated with any detected or non-detected levels of any compounds reported herein. This Certificate shall not be reproduced except in full, without the written approval of Trace Analytics, Inc. Lic# 0014 - Foreign Matter (Visual Inspection) - Moisture (Moisture Analyzer) - Water Activity (Water Activity Meter) - Microbiological (3M Petrifilm/qPCR) - Potency (HPLC-UV) - Residual Solvents (GCMS) - Mycotoxins (ELISA)

[www.confidentcannabis.com](http://www.confidentcannabis.com)

## Nutra Pure LLC

Vancouver, WA 98685  
support@cbdpure.com  
(800) 240-9884  
Lic. #

## Sample: 01TRC006819.00267

Strain: NP-SG112318

Sample Received: 01/22/2019; Report Created: 02/04/2019  
Leaf Inventory/Lot ID: ; Leaf Pre-Transfer Inventory/Lot ID:  
Leaf Batch ID: ; Leaf Pre-Transfer Batch ID:  
Leaf Manifest ID:

## NP-SG112318

Other, Industrial Hemp  
External Batch ID:



## Heavy Metals

Pass

Analyte	Mass	LOQ	Limit	Status
	PPM	PPM	PPM	
Arsenic	ND	0.139	2.000	Pass
Cadmium	ND	0.111	0.820	Pass
Lead	ND	0.150	1.200	Pass
Mercury	ND	0.027	0.400	Pass

Notes: Subcontracted

LOQ = Limit of Quantitation; The reported result is based on a sample weight with the applicable moisture content for that sample; Unless otherwise stated all quality control samples performed within specifications established by the Laboratory.

908 N. Howard St., Suite 101  
Spokane, WA  
(509) 284-7522  
<http://traceanalytics.com/>  
Lic# 0014



Sara Minier  
Senior Scientist

Confident Cannabis  
All Rights Reserved  
support@confidentcannabis.com  
(866) 506-5866  
[www.confidentcannabis.com](http://www.confidentcannabis.com)



This product has been tested by Trace Analytics, Inc using valid testing methodologies and a quality system as required by state law. Values reported relate only to the product tested. Trace Analytics, Inc makes no claims as to the efficacy, safety or other risks associated with any detected or non-detected levels of any compounds reported herein. This Certificate shall not be reproduced except in full, without the written approval of Trace Analytics, Inc. Lic# 0014 - Foreign Matter (Visual Inspection) - Moisture (Moisture Analyzer) - Water Activity (Water Activity Meter) - Microbiological (3M Petrifilm/qPCR) - Potency (HPLC-UV) - Residual Solvents (GCMS) - Mycotoxins (ELISA)